



Big Dutchman®



SUNFarm

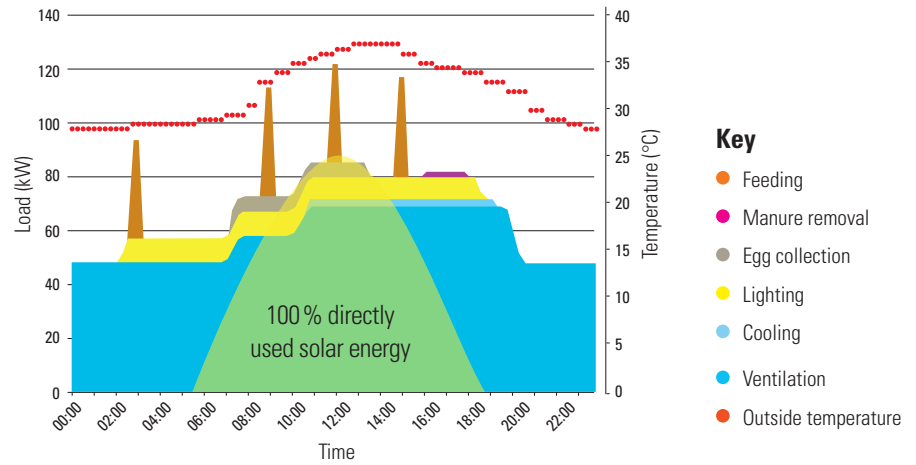
The modern photovoltaic system for environmentally-friendly power generation and permanently lower energy costs

SUNFarm

Use the power of the sun to reduce energy costs sustainably and permanently

Agricultural buildings are especially well-suited for the installation of modern photovoltaic (PV) systems. With our scalable modular system, you can reduce your electricity costs permanently nearly anywhere in the world using the free power of the sun. And best of all: Where the energy requirements for a good house climate are the highest due to high solar irradiation, the system amortizes the quickest. This is because depending on the location and general conditions, SUNFarm can cover up to 70 percent of your energy demand. Our experts will use the major location and building data to prepare a calculation and to quote the PV system.

Typical load curve of a layer house



The photovoltaic system for agriculture

If you want to reduce energy costs in livestock production permanently, SUNFarm is the way to go. We will install state-of-the-art rooftop PV modules on your livestock buildings, with components from reputable manufacturers that are well-suited for use in agriculture and that guarantee a calculable output. You can use the produced solar power directly in your barns and feed excess electricity into the public grid.



Service

- ✓ consulting and individual configuration
- ✓ turnkey installation
- ✓ regular system monitoring (optional)



Technology

- ✓ robust technology suitable for agriculture
- ✓ calculable output thanks to performance guarantee



Application

- ✓ permanent reduction of energy costs
- ✓ security in case of increasing electricity prices
- ✓ environmental protection: permanent reduction of the carbon footprint

System integration

- ✓ increased efficiency due to direct supply to electrical equipment in the barn

Benefit from the extensive Big Dutchman knowledge

One of our knowledgeable specialists will consult with you and create an individual configuration of SUNFarm, customised to meet your needs.

Our experts install and commission the system on site. Afterwards, we will be happy to support you with the monitoring of the system, if requested.

Are you thinking about building a new barn? Contact us to learn more about our complete solutions from one single source, including the building and the housing equipment.

SUNFarm		100 kWp	50 kWp
PV modules	cells	360	180
Used roof area	m ²	approx. 600	approx. 300
Installation period	days	10–12	5–7
Annual electricity demand	kWh	200,000	200,000
One-time investment SUNFarm	€	70,000	40,000
Annual electricity generation SUNFarm	kWh	approx. 90,000	approx. 45,000
Annual savings at electricity costs of €0.15/kWh	€	6,750*	6,750**
Amortization period	years	approx. 6.9	approx. 5.9
* at 50 % personal use			
** at 100 % personal use			

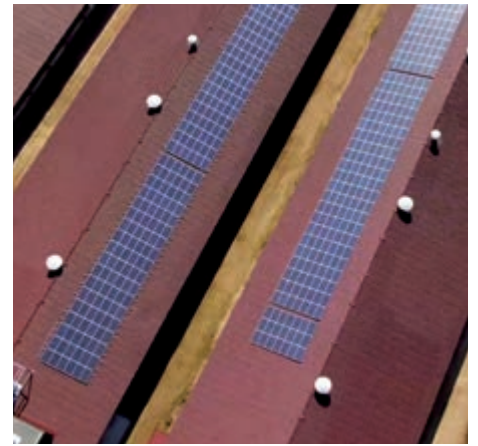
Two example calculations



SUNFarm with a power of 669.76 kWp and 2392 modules



System power: 749 kWp



System power: 186 kWp



System power: 99 kWp

The advantages at a glance

- ✓ significant and permanent reduction of energy costs;
- ✓ long-term security in case of increasing electricity prices;
- ✓ up to 70 % of the total energy demand covered by the annual solar yield;
- ✓ long service life, low maintenance costs;
- ✓ no management costs;
- ✓ personal monitoring of the energy production, also remotely;
- ✓ short amortization periods possible;
- ✓ scalable thanks to the modular design;
- ✓ sustainable reduction of CO₂ emissions by up to 70 %;
- ✓ systems ideally suited for agriculture with maximum functional reliability.



Big Dutchman®

Europe, Middle East & Africa:
Big Dutchman International GmbH
 P.O. Box 1163 - 49360 Vechta, Germany
 Tel. +49(0)4447 801-0 · Fax -237
 big@bigdutchman.de
 www.bigdutchman.de

USA: Big Dutchman, Inc.

Tel. +1 616 392 5981 · bigd@bigdutchmanusa.com
 www.bigdutchmanusa.com

Brazil: Big Dutchman (Brasil) Ltda.

Tel. +55 16 2108 5310 · bdbr@bigdutchman.com.br
 www.bigdutchman.com.br

Russia: 000 "Big Dutchman"

Tel. +7 495 229 5161 · big@bigdutchman.ru · www.bigdutchman.ru

Asia/Pacific: BD Agriculture (Malaysia) Sdn. Bhd.

Tel. +60 3 334 83 555 · bdasia@bigdutchman.com · www.bigdutchman.com

China: Big Dutchman (Tianjin) Livestock Equipment Co., Ltd.

Tel. +86 10 6476 1888 · bdcnsales@bigdutchman.com
 www.bigdutchmanchina.com

